

**SNUG COTTAGE**  
*Est. 1995*  
**HARDWARE**



**SNUG COTTAGE HARDWARE**

*Exterior Hardware*

**2017**

**RETAIL PRICE LIST USA**

# SNUG COTTAGE HARDWARE PRODUCT SECTION

PRODUCTS PRODUCED AND DISTRIBUTED BY SNUG COTTAGE HARDWARE

## Page 6 & 7 (OLD FASHIONED HEAVY REVERSIBLE HINGES)

Item #	Item Name	US Retail	Packaged	Weight
8292-072	7" HDG Heavy Rev. Hinge	35.10	each or 5/carton	4/20
8292-07SP	7" BPPCG Heavy Rev Hinge with Screws	53.73	each or 6/carton	5/27
8292-122	12" HDG Heavy Rev Hinge	42.21	each or 5/carton	6/30
8292-12SP	12" BPPCG Heavy Rev Hinge with Screws	64.71	each or 6/carton	6/32
8292-142	14" HDG Heavy Rev Hinge	46.80	each or 5/carton	6/26
8292-14SP	14" BPPCG Heavy Rev Hinge with Screws	73.44	each or 6/carton	6/34
8292-162	16" HDG Heavy Rev Hinge	53.28	each or 5/carton	6/29
8292-16SP	16" BPPCG Heavy Rev Hinge with Screws	77.13	each or 6/carton	6/38
8292-182	18" HDG Heavy Rev Hinge	61.02	each or 5/carton	9/42
8292-18SP	18" BPPCG Heavy Rev Hinge with Screws	92.88	each or 5/carton	9/47
8292-202	20" HDG Heavy Rev Hinge	64.80	each or 5/carton	9/44
8292-20SP	20" BPPCG Heavy Rev Hinge with Screws	100.98	each or 5/carton	10/51
8292-242	24" HDG Heavy Rev Hinge	82.62	each or 2/carton	11/22
8292-24SP	24" BPPCG Heavy Rev Hinge with Screws	117.54	each or 5/carton	12/62
8292-302	30" HDG Heavy Rev Hinge	119.88	each or 2/carton	15/30
8292-30SP	30" BPPCG Heavy Rev Hinge with Screws	179.01	each or 4/carton	16/62
8292-362	36" HDG Heavy Rev Hinge	152.73	each or 2/carton	16/32
8292-36SP	36" BPPCG Heavy Rev Hinge with Screws	219.42	each or 4/carton	18/70
8292-482	48" HDG Heavy Rev Hinge	225.81	each	28
8292-48SP	48" BPPCG Heavy Rev Hinge with Screws	284.58	each	28

BPPCG = Black Polyester Powder Coated over hot dipped Galvanized

## Page 9 (STAINLESS STEEL OLD FASHIONED HINGE & CURVED BPPCG OLD FASHIONED HEAVY DUTY HINGES)

Item #	Item Name	US Retail	Packaged	Weight
8292-12SS	12" Black Stainless Steel Old Fashioned Hinge	119.34	each or 6/carton	6/32
8292-16SS	16" Black Stainless Steel Old Fashioned Hinge	143.01	each or 6/carton	6/36
8292-12LP	12" Curved BPPCG Hinge (Left Hand)	49.59	each or 6/carton	3/19
8292-12L2	12" Curved Galvanized Hinge (Left Hand)	40.94	each or 6/carton	3/19
8292-12RP	12" Curved BPPCG Hinge (Right Hand)	49.59	each or 6/carton	3/19
8292-12R2	12" Curved Galvanized Hinge (Right Hand)	40.94	each or 6/carton	3/19

## Page 10 & 11 (CRANKED BANDS WITH PINS)

Item #	Item Name	US Retail	Packaged	Weight
8295-122	12" HDG Cranked Band and Pin	36.72	each or 5/carton	5/21
8295-12SP	12" BPPCG Cranked Band, Pin & Screws	58.77	each or 6/carton	5/27
8295-182	18" HDG Cranked Band and Pin	56.16	each or 5/carton	8/41
8295-18SP	18" BPPCG Cranked Band, Pin & Screws	82.08	each or 6/carton	8/41
8295-242	24" HDG Cranked Band and Pin	71.64	each or 2/carton	11/23
8295-24SP	24" BPPCG Cranked Band, Pin & Screws	106.92	each or 6/carton	11/67
8295-362	36" HDG Cranked Band and Pin	139.32	each or 2/carton	16/33
8295-36SP	36" BPPCG Cranked Band, Pin & Screws	193.68	each or 4/carton	16/66

## Page 12 (CURVED CRANKED BANDS WITH PINS)

Item #	Item Name	US Retail	Packaged	Weight
8295-12LD2	HDG Curved Cranked Bands with Pins (Left Down Configuration)	53.28	each or 6/carton	5/30
8295-12LDP	BPPCG Curved Cranked Bands with Pins (Left Down Configuration)	64.26	each or 6/carton	5/30
8295-12LU2	HDG Curved Cranked Bands with Pins (Left Up Configuration)	53.28	each or 6/carton	5/30
8295-12LUP	BPPCG Curved Cranked Bands with Pins (Left Up Configuration)	64.26	each or 6/carton	5/30
8295-12RD2	HDG Curved Cranked Bands with Pins (Right Down Configuration)	53.28	each or 6/carton	5/30
8295-12RDP	BPPCG Curved Cranked Bands with Pins (Right Down Configuration)	64.26	each or 6/carton	5/30
8295-12RU2	HDG Curved Cranked Bands with Pins (Right Up Configuration)	53.28	each or 6/carton	5/30
8295-12RUP	BPPCG Curved Cranked Bands with Pins (Right Up Configuration)	64.26	each or 6/carton	5/30

## Page 13 (ADJUSTABLE CRANKED BANDS WITH PINS, "DUMMY" HINGE FRONTS)

Item #	Item Name	US Retail	Packaged	Weight
8295-12A2	12" HDG Adjustable Cranked Bands with Pins	47.70	each or 6/carton	6/36
8295-12ASP	12" BPPCG Adjustable Cranked Bands with Pins	73.44	each or 6/carton	6/36
8293-122	12" Galvanized Hinge Fronts	26.19	per pair	3
8293-12SP	12" BPPCG Hinge Fronts	31.76	per pair	3
8293-182	18" Galvanized Hinge Fronts	34.02	per pair	4
8293-18SP	18" BPPCG Hinge Fronts	41.31	per pair	4
8293-242	24" Galvanized Hinge Fronts	48.06	per pair	6
8293-24SP	24" BPPCG Hinge Fronts	57.69	per pair	6

## Page 14 (ADJUSTABLE SELF CLOSING STRAP HINGES)

Item #	Item Name	US Retail	Packaged	Weight
7100-BPSS	Black Adjustable Stainless Self Closing Strap "T" Hinge	61.38	each or 12/carton	4/39
7400-BWSS	Black Adj. SS Self Closing Strap Hinge (wraps around post)	68.94	each or 12/carton	4/48
7400-WWSS	White Adj. SS Self Closing Strap Hinge (wraps around post)	68.94	each or 12/carton	4/48

## Page 15 (12" STRAPS (WITH PINS TO SCREW), 1/2" HOOKS & EYES)

Item #	Item Name	US Retail	Packaged	Weight
8294-122	12" Galvanized Straight Bands with 4" screw pin	36.72	each or 10/carton	4/35
8294-12SP	12" BPPCG Straight Bands with 4" screw pin	58.77	each or 10/carton	4/35
8310-4BSS	Black over Stainless 4" x 1/2" Hook & Eye	25.29	each or 10/carton	1/11
8310-4SC	Satin Stainless (Bare Metal) 4" x 1/2" Hook & Eye	25.29	each or 10/carton	1/11

# SNUG COTTAGE HARDWARE PRODUCT SECTION

PRODUCTS PRODUCED AND DISTRIBUTED BY SNUG COTTAGE HARDWARE

## Page 16 (TWISTED RING GATE LATCH FOR WOOD - ORIGINAL FLUSH MOUNT)

Item #	Item Name	US Retail	Packaged	Weight
4149-L6SP	Black Twisted Ring Latch	42.75	each or 10/carton	2/18
4149-LESP	Black Twisted Ring Latch with Padlock Eyes	48.51	each or 10/carton	2/20
4149-K12	12" Aluminum Keystock	5.58	each	

## Page 17 (TWISTED RING GATE LATCH FOR WOOD - SET BACK MOUNT)

Item #	Item Name	US Retail	Packaged	Weight
4152-L6SP	Black Twisted Ring Latch (Set Back Mount)	47.70	each or 10/carton	2/21
4152-LESP	Black Twisted Ring Latch with Padlock Eyes (Set Back Mount)	53.28	each or 10/carton	2/23

## Page 18 & 19 (SELF COLOR TWISTED RING LATCH, WARWICKSHIRE LATCH, SLIDE RING LATCH, PADLOCK EYES, RING PULLS)

Item #	Item Name	US Retail	Packaged	Weight
1300-316	Padlock Eyes - Satin 316 Stainless Steel	9.18	each or 25/carton	1/5
1300-00SP	Padlock Eyes - Black Powder over SS (wood screws)	6.48	each or 25/carton	1/5
1300-PVCB	Padlock Eyes - Black Powder over SS (TEK screws for PVC)	6.48	each or 25/carton	1/5
4149-062	Bare Metal Ring Latch with Galvanized Bar	34.92	each or 10/carton	2/18
4149-GalRing	Bare Metal Twisted Ring Pull	9.72	each or 10/carton	1/5
4149-RING	Black Twisted Ring Pull	9.72	each or 10/carton	1/5
6149-RING	Black Contemporary Ring Pull	17.28	each or 10/carton	1/9
4017-802	Galvanized Warwickshire Ring Latch	82.62	each or 6/carton	5
4017-8SP	Black Powder over Galvanized Warwickshire Ring Latch	100.98	each or 6/carton	12206
4151-0SP	Black Twisted Ring Latch for Sliding Doors	53.28	each or 6/carton	6/33

## Page 20 (HAMPTON THUMB LATCH FOR WOOD - ORIGINAL BAR FLUSH MOUNTED (HANDLE ON OPPOSITE SIDE TO HINGES))

Item #	Item Name	US Retail	Packaged	Weight
For Gates Up to 5" Thick (includes short and long thumb bar)				
4300-WSP	Hampton Thumb Latch for Wood - flush mount	59.13	each or 10/carton	2/12
4300-WSEP	Hampton Thumb Latch for Wood (with Padlock Eyes)	64.63	each or 10/carton	2/14

## Page 21 (HAMPTON THUMB LATCH FOR WOOD - SET BACK MOUNTED (HANDLE ON SAME SIDE AS HINGES))

Item #	Item Name	US Retail	Packaged	Weight
For Gates Up to 5" Thick (includes short and long thumb bar)				
4500-WSP	Hampton Thumb Latch for Wood - set back mount	61.02	each or 10/carton	2/12
4500-WSEP	Hampton Thumb Latch for Wood (with Padlock Eyes)	66.69	each or 10/carton	2/14

## Page 22 (STAINLESS GRAVITY CATCHES & BRUTUS GATE SPRING)

Item #	Item Name	US Retail	Packaged	Weight
4120-HD316	Natural Brushed 316 SS Heavy Duty Fixed Gravity Latch	40.41	each or 5/carton	2/6
4120-HDSS	Black Heavy Duty Fixed Gravity Latch	31.59	each or 5/carton	2/6
4120-HF316	Satin 316 SS Heavy Duty Floating Gravity Latch	52.38	each or 5/carton	2/9
4120-HFSS	Black Heavy Duty Floating Gravity Latch	41.49	each or 5/carton	2/9
4612-HSS	Black Stainless BRUTUS Gate Spring	41.31	each or 10/carton	2/15
4612-HSC	Satin Stainless BRUTUS Gate Spring	41.31	each or 10/carton	2/15

## Page 23 (GATE STOP FOR WOOD, CAPE COD LATCH & STAINLESS STEEL GATE HANDLE)

Item #	Item Name	US Retail	Packaged	Weight
1400-BSS	Gate Stop-Black Stainless Steel	9.55	each or 25/carton	1/9
1400-WSS	Gate Stop-White Stainless Steel	11.34	each or 25/carton	1/9
1400-316	Gate Stop-Satin 316 Stainless Steel	11.34	each or 25/carton	1/9
4130-BSS	Black Stainless Steel Handle	10.26	each or 25/carton	1/10
4900-002	Galvanized Cape Cod Latch	56.88	each or 10/carton	3/22
4900-00SP	BPPCG Cape Cod Latch	73.44	each or 6/carton	3/16

## Page 24 (WOODEN GATE & DOOR LATCHES)

Item #	Item Name	US Retail	Packaged	Weight
4700-110	Cambridge - Oak Latch with Leather Pull String	92.70	each or 10/carton	1/12
4701-110	Oxford - Oak Latch with thru Wooden Lever	102.06	each or 10/carton	1/12

## Page 25 (4" & 6" CAST IRON CABIN HOOKS, 12" & 24" DOOR/GATE HOLD BACKS)

Item #	Item Name	US Retail	Packaged	Weight
4270-042	Galvanized 4" Cabin Hook	9.90	each or 10/carton	1/4
4270-04SP	BPPCG 4" Cabin Hook	13.23	each or 10/carton	1/4
4270-062	Galvanized 6" Cabin Hook	13.68	each or 10/carton	1/5
4270-06SP	BPPCG 6" Cabin Hook	16.56	each or 10/carton	1/5
4270-122	Galvanized 12" Cabin Hook	21.15	each or 10/carton	2/16
4270-12SP	BPPCG 12" Cabin Hook	29.88	each or 6/carton	2/10
4270-242	Galvanized 24" Cabin Hook	22.77	each or 10/carton	3/30
4270-24SP	BPPCG 24" Cabin Hook	34.20	each or 6/carton	3/18

## Page 26 (CANNONBALL GATE CLOSER)

Item #	Item Name	US Retail	Packaged	Weight
1400-BSS	Gate Stop-Black Stainless Steel	9.54	each or 25/carton	1/9
CBP	Cannonball Gate Closer - BPPCG (with 5' of chain)	87.21	each or 4/carton	8/32
CBP-MK	Mounting Kit for Cannonball Gate Closer	16.56	each	1

# SNUG COTTAGE HARDWARE PRODUCT SECTION

PRODUCTS PRODUCED AND DISTRIBUTED BY SNUG COTTAGE HARDWARE

## Page 27 (STAINLESS STEEL TRADITIONAL CANE BOLTS FOR WOOD - NOW LOCKABLE)

Item #	Item Name	US Retail	Packaged	Weight
4096-18SS	18" Traditional Black Stainless Steel Cane Bolt	41.49	each or 20/carton	3/46
4096-18316	18" Traditional Satin 316 Stainless Cane Bolt	58.68	each or 20/carton	3/46
4096-24SS	24" Traditional Black Stainless Steel Cane Bolt	50.49	each or 20/carton	3/56
4096-24316	24" Traditional Satin 316 Stainless Cane Bolt	69.75	each or 20/carton	3/56
4096-36SS	36" Traditional Black Stainless Steel Cane Bolt	66.24	each or 10/carton	4/39
4096-36316	36" Traditional Satin 316 Stainless Cane Bolt	91.62	each or 10/carton	3/56
4096-48SS	48" Traditional Black Stainless Steel Cane Bolt	75.78	each or 10/carton	5/48

## Page 29 (CONTEMPORARY STYLED 316 STAINLESS CRANKED BANDS WITH PINS)

Item #	Item Name	US Retail	Packaged	Weight
6295-16316	16" Satin 316 Contemporary Bands	243.00	each or 6/carton	6/36
6295-16SP	16" Black 316 Contemporary Bands	243.00	each or 6/carton	6/36
6295-24316	24" Satin 316 Contemporary Bands	351.00	each or 6/carton	10/57
6295-24SP	24" Black 316 Contemporary Bands	351.00	each or 6/carton	10/57

## Page 30 (CONTEMPORARY STYLED 316 STAINLESS BUTT HINGES & CLEAT HANDLE)

Item #	Item Name	US Retail	Packaged	Weight
6100-S454	Natural Satin 316 Stainless Butt Hinges	85.41	each or 10/carton	2/19
6100-B454	Black 316 Stainless Butt Hinges	85.41	each or 10/carton	2/19
6200-SSS	Shiny 316 Stainless Cleat Handle	51.39	each	2
6200-BSS	Black 316 Stainless Cleat Handle	62.46	each	2

## Page 31 (CONTEMPORARY STYLED STAINLESS STEEL CANE BOLTS FOR WOOD - NOW LOCKABLE)

Item #	Item Name	US Retail	Packaged	Weight
6096-18SS	18" Contemporary Black Stainless Steel Cane Bolt	47.07	each or 20/carton	3/46
6096-18316	18" Contemporary Satin 316 Stainless Cane Bolt	66.69	each or 20/carton	3/46
6096-24SS	24" Contemporary Black Stainless Steel Cane Bolt	56.07	each or 20/carton	3/56
6096-24316	24" Contemporary Satin 316 Stainless Cane Bolt	77.76	each or 20/carton	3/56
6096-36SS	36" Contemporary Black Stainless Steel Cane Bolt	71.91	each or 10/carton	4/39
6096-36316	36" Contemporary Satin 316 Stainless Cane Bolt	99.63	each or 20/carton	3/56
6096-48SS	48" Contemporary Black Stainless Steel Cane Bolt	81.45	each or 10/carton	5/48

## Page 32 (CONTEMPORARY STYLED RING LATCH)

Item #	Item Name	US Retail	Packaged	Weight
6149-L6SP	Black Contemporary Styled Ring Latch	62.64	each or 10/carton	3/24
6149-LESP	Black Contemporary Styled Ring Latch With Padlock Eyes	68.31	each or 10/carton	3/26
6149-RING	Black Contemporary Ring Pull	17.28	each or 10/carton	1/9
4149-K12	12" Aluminum Keystock	5.58	each	

## Page 33 (CONTEMPORARY STYLED SUFFOLK LATCH)

Item #	Item Name	US Retail	Packaged	Weight
6159-S316	Satin 316 Stainless Suffolk Latch	169.83	each or 6/carton	3/15
6159-B316	Black 316 Stainless Suffolk Latch	169.83	each or 6/carton	3/15

## Page 34 & 35 (HEAVY DUTY GALVANIZED LOCKABLE CANE BOLTS)

Item #	Item Name	US Retail	Packaged	Weight
5000-002	HDG Cane Bolt Keep for 12", 15" or 24" Cane Bolts	7.83	each	1
5000-00SP	BPPCG Cane Bolt Keep for 12, 15", or 24" Cane Bolts	10.62	each	1
5000-012	HDG Cane Bolt Keep for 36" Cane Bolt	9.54	each	1
5000-01SP	BPPCG Cane Bolt Keep for 36" Cane bolt	12.51	each	1
5000-122	12" HDG Cane Bolt	43.29	each or 10/carton	4/34
5000-12SP	BPPCG 12" Cane Bolt	52.29	each or 6/carton	4/24
5000-152	15" HDG Cane Bolt	45.90	each or 10/carton	4/40
5000-15SP	BPPCG 15" Cane Bolt	56.34	each or 6/carton	5/28
5000-242	24" HDG Cane Bolt	53.28	each or 10/carton	6/58
5000-24SP	24" BPPCG Cane Bolt	64.26	each or 6/carton	7/38
5000-362	36" HDG Cane Bolt and Separate Lockable Keeper	71.64	each or 4/carton	15/60
5000-36SP	36" BPPCG Cane Bolt & Separate Lockable Keeper	90.36	each or 4/carton	15/60

## Page 36 (DOUBLE STRAP HINGES - CENTRAL EYE BANDS-SOLD INDIVIDUALLY)

Item #	Item Name	US Retail	Packaged	Weight
8312-422	12" HDG Double Strap FG Band	30.51	each or 5/carton	4/20
8312-42SP	12" BPPCG Double Strap FG Band	47.70	each or 6/carton	4/26
8312-482	18" HDG Double Strap FG Band	35.82	each or 5/carton	6/31
8312-48SP	18" BPPCG Double Strap FG Band	56.88	each or 6/carton	6/31
8312-542	24" HDG Double Strap FG Band	40.41	each or 5/carton	8/38
8312-54SP	24" BPPCG Double Strap FG Band	62.46	each or 6/carton	8/48
8312-652	5" HDG Double Strap FG Band	17.01	each or 10/carton	3/30
8312-65SP	5" BPPCG Double Strap FG Band	25.74	each or 10/carton	3/30

## Page 37 (DOUBLE STRAP HINGES - CENTRAL EYE - COMPLETE HINGE SETS)

Item #	Item Name	US Retail	Packaged	Weight
with 8800 Pin (full threaded nut & washer each end)				
8312-S122	12" HDG Adjustable FG Set	85.77	per set	12
8312-S12P	12" BPPCG Adjustable FG Set	122.40	per set	12
8312-S182	18" HDG Adjustable FG Set	91.62	per set	14
8312-S18P	18" BPPCG Adjustable FG Set	131.13	per set	14
8312-S242	24" HDG Adjustable FG Set	97.29	per set	16
8312-S24P	24" BPPCG Adjustable FG Set	136.44	per set	16

# SNUG COTTAGE HARDWARE PRODUCT SECTION

PRODUCTS PRODUCED AND DISTRIBUTED BY SNUG COTTAGE HARDWARE

Item #	Item Name	US Retail	Packaged	Weight
with 8317 Pin (with square shaft and single nut & washer)				
8312-E122	12" HDG Adjustable FG Set	92.79	per set	13
8312-E12P	12" BPPCG Adjustable FG Set	122.13	per set	13
8312-E182	18" HDG Adjustable FG Set	97.83	per set	15
8312-E18P	18" BPPCG Adjustable FG Set	127.98	per set	15
8312-E242	24" HDG Adjustable FG Set	102.24	per set	17
8312-E24P	24" BPPCG Adjustable FG Set	132.93	per set	17

**Page 38 (DOUBLE STRAPS - REAR EYE - COMPLETE HINGE SETS)**

Item #	Item Name	US Retail	Packaged	Weight
3.0 inches between straps				
8324-S122	12" HDG Adjustable FG Set	118.98	per set	15
8324-S12P	12" BPPCG Adjustable FG Set	147.60	per set	15
8324-S182	18" HDG Adjustable FG Set	126.63	per set	18
8324-S18P	18" BPPCG Adjustable FG Set	163.98	per set	18
8324-S242	24" HDG Adjustable FG Set	137.07	per set	21
8324-S24P	24" BPPCG Adjustable FG Set	188.37	per set	21
3.5 inches between straps				
8325-S122	12" HDG Adjustable FG Set	122.76	per set	16
8325-S12P	12" BPPCG Adjustable FG Set	151.47	per set	16
8325-S182	18" HDG Adjustable FG Set	130.14	per set	19
8325-S18P	18" BPPCG Adjustable FG Set	167.40	per set	19
8325-S242	24" HDG Adjustable FG Set	140.94	per set	22
8325-S24P	24" BPPCG Adjustable FG Set	191.88	per set	22

**Page 40 (DOUBLE STRAPS - REAR EYE BANDS - SOLD INDIVIDUALLY)**

Item #	Item Name	US Retail	Packaged	Weight
3.0 inches between straps				
8324-052	5" HDG FG Band - Rear Eye	19.08	each or 10/carton	3/28
8324-05SP	5" BPPCG FG Band - Rear Eye	26.64	each or 10/carton	3/28
8324-122	12" HDG FG Band - Rear Eye	34.11	each or 5/carton	5/23
8324-12SP	12" BPPCG FG Band - Rear Eye	43.74	each or 6/carton	5/29
8324-182	18" HDG FG Band - Rear Eye	38.16	each or 5/carton	6/30
8324-18SP	18" BPPCG FG Band - Rear Eye	52.29	each or 4/carton	7/27
8324-242	24" HDG FG Band - Rear Eye	43.74	each or 5/carton	8/40
8324-24SP	24" BPPCG FG Band - Rear Eye	65.16	each or 4/carton	9/33
3.5 inches between straps				
8325-052	5" HDG FG Band - Rear Eye (3.5" between straps)	20.97	each or 10/carton	3/30
8325-05SP	5" BPPCG FG Band - Rear Eye (3.5" between straps)	28.62	each or 10/carton	3/30
8325-122	12" HDG FG Band - Rear Eye (3.5" between straps)	36.18	each or 5/carton	5/23
8325-12SP	12" BPPCG FG Band - Rear Eye (3.5" between straps)	45.72	each or 4/carton	6/21
8325-182	18" HDG FG Band - Rear Eye (3.5" between straps)	40.05	each or 5/carton	7/32
8325-18SP	18" BPPCG FG Band - Rear Eye (3.5" between straps)	54.18	each or 4/carton	7/28
8325-242	24" HDG FG Band - Rear Eye (3.5" between straps)	45.72	each or 5/carton	8/40
8325-24SP	24" BPPCG FG Band - Rear Eye (3.5" between straps)	67.05	each or 4/carton	9/34

**Page 41 (ADJUSTABLE BOTTOM FITTING, ADJUSTABLE GATE EYES, STRAIGHT EYE DOUBLE STRAP, 12" & 24" GATE HOLDBACK)**

Item #	Item Name	US Retail	Packaged	Weight
4270-122	Galvanized 12" Cabin Hook	21.15	each or 10/carton	2/16
4270-12SP	BPPCG 12" Cabin Hook	29.88	each or 6/carton	2/10
4270-242	Galvanized 24" Cabin Hook	22.77	each or 10/carton	3/30
4270-24SP	BPPCG 24" Cabin Hook	34.11	each or 6/carton	3/18
8250-002	Galvanized Adjustable Bottom Fitting	30.51	each or 10/carton	3/31
8250-00P	BPPCG Adjustable Bottom Fitting	40.05	each or 5/carton	3/16
8251-042	4" Galvanized Adjustable Gate Eye	11.52	each or 10/carton	2/13
8251-062	6" Galvanized Adjustable Gate Eye	13.77	each or 10/carton	2/15
8251-082	8" Galvanized Adjustable Gate Eye	15.03	each or 10/carton	2/17
8251-102	10" Galvanized Adjustable Gate Eye	16.20	each or 10/carton	2/19
8322-052	5" HDG Straight Eye Double Strap Hinge	19.08	each or 10/carton	4/35
8322-05SP	5" BPPCG Straight Eye Double Strap Hinge	27.54	each or 10/carton	4/35
8322-242	24" HDG Straight Eye Double Strap Hinge	43.74	each or 5/carton	8/38
8322-24SP	24" BPPCG Straight Eye Double Strap Hinge	66.06	each or 6/carton	8/48

**Page 42 & 43 (HEAVY GATE HANGERS (3/4" PIN), HEAVY DUTY STRAIGHT STRAP HINGES)**

Item #	Item Name	US Retail	Packaged	Weight
8254-342	HDG Hanger on 4" Plate	19.08	each or 10/carton	2/21
8254-34P	BPPCG Hanger on 4" Plate	25.74	each or 5/carton	2/11
8255-342	HDG Adjustable Gate Hanger on 4" Plate	22.77	each or 10/carton	3/26
8255-34P	BPPCG Adjustable Gate Hanger on 4" Plate	30.51	each or 5/carton	3/14
8256-342	HDG Mounting Plate with 8" Adjustable Pin	28.44	each	3
8256-34P	BPPCG Mounting Plate with 8" Adjustable Pin	33.93	each	3
FP-8256	6.5" HDG carriage bolts, nuts, & washers (5 pack)	9.54	each	1
8257-342	HDG Field Gate Hanger for Brickwork	22.41	each or 5/carton	3/13
8305-182	18" Cranked Strap Hinge Pair w 3/4" Eye - HDG	38.52	each or 5/carton	6/30
8305-18P	18" Cranked Strap Hinge Pair w 3/4" Eye - BPPCG	51.66	each or 5/carton	6/30
8305-242	24" Cranked Strap Hinge Pair w 3/4" Eye - HDG	54.90	each or 2/carton	8/15
8305-24P	24" Cranked Strap Hinge Pair w 3/4" Eye - BPPCG	66.33	each or 2/carton	8/15
8305-362	36" Cranked Strap Hinge Pair w 3/4" Eye - HDG	91.35	each or 2/carton	9/18
8305-36P	36" Cranked Strap Hinge Pair w 3/4" Eye - BPPCG	125.10	each or 2/carton	9/18

# SNUG COTTAGE HARDWARE PRODUCT SECTION

## PRODUCTS PRODUCED AND DISTRIBUTED BY SNUG COTTAGE HARDWARE

### Page 42 & 43 (HEAVY GATE HANGERS (3/4" PIN), HEAVY DUTY STRAIGHT STRAP HINGES) continuec

Item #	Item Name	US Retail	Unit	Packaged	Weight
8307-182	18" Straight Strap Hinge Pair w 3/4" Eye- HDG	36.18	per pair	each or 5/carton	6/28
8307-18P	18" Straight Strap Hinge Pair w 3/4" Eye- BPPCG	47.70	per pair	each or 5/carton	6/28
8307-242	24" Straight Strap Hinge Pair w 3/4" Eye- HDG	49.59	per pair	each or 2/carton	7/15
8307-24P	24" Straight Strap Hinge Pair w 3/4" Eye-BPPCG	62.82	per pair	each or 2/carton	7/15
8307-362	36" Straight Strap Hinge Pair w 3/4" Eye-HDG	81.90	per pair	each or 2/carton	12/23
8307-36P	36" Straight Strap Hinge Pair w 3/4" Eye-BPPCG	110.16	per pair	each or 2/carton	12/23
8308-072	7" HDG. Pin to Screw (3/4")	14.67	each	each or 10/carton	2/17
8308-07P	7" BPPCG Pin to Screw (3/4")	20.34	each	each or 10/carton	2/17
8309-052	5" HDG.Eye to Screw (3/4")	13.23	each	each or 10/carton	1/9
8309-05P	5" BPPCG Eye to Screw (3/4")	19.08	each	each or 10/carton	1/9
8317-002	13" HDG FG Pin to Bolt	18.36	each	each or 10/carton	3/26
8801-082	8" HDG Threaded Adjustable Pin (3/4")	13.32	each	each or 30/carton	2/48
8801-08P	8" BPPCG Threaded Adjustable Pin (3/4")	18.54	each	each or 10/carton	2/17
8801-122	12" HDG Threaded Adjustable Pin (3/4")	14.67	each	each or 30/carton	2/60
8801-12P	12" BPPCG Threaded Adjustable Pin (3/4")	20.52	each	each or 10/carton	2/21
8800-162	16" HDG Threaded Adjustable Pin (3/4")	22.50	each	each or 10/carton	3/30
8800-16P	16" BPPCG Threaded Adjustable Pin (3/4")	30.51	each	each or 10/carton	3/30

### Page 44 (HEAVY DUTY CRANKED STRAP HINGE SETS) (Incl. 1 pair of cranked strap hinges and 2 heavy adj. mounting plates)

Item #	Item Name	US Retail	Unit	Packaged	Weight
8305-S182	18" Heavy Cranked Strap Hinge Set - HDG	90.00	per set	each or 4/carton	13/50
8305-S18P	18" Heavy Cranked Strap Hinge Set - BPPCG	114.12	per set	each or 4/carton	13/50
8305-S242	24" Heavy Cranked Strap Hinge Set - HDG	106.29	per set	each or 4/carton	15/56
8305-S24P	24" Heavy Cranked Strap Hinge Set - BPPCG	128.79	per set	each or 4/carton	15/56
8305-S362	36" Heavy Cranked Strap Hinge Set - HDG	142.74	per set	each or 4/carton	16/62
8305-S36P	36" Heavy Cranked Strap Hinge Set - BPPCG	187.56	per set	each or 4/carton	16/62
FP-8256	6.5" HDG carriage bolts, nuts, & washers (5 pack)	9.54	each	each	1

### Page 45 (IRISH GATE LATCH, HEAVY DUTY HASP)

Item #	Item Name	US Retail	Unit	Packaged	Weight
4000-002	HDG "T" Heavy Duty Hasp	16.56	each	each or 10/carton	2/18
4000-00SP	BPPCG Heavy Duty "T" Hasp	22.95	each	each or 10/carton	2/18
8328-002	Galvanized Irish Gate Latch	39.06	each	each or 5/carton	4/20
8328-00SP	BPPCG Irish Gate Latch	53.73	each	each or 5/carton	4/20

### Page 46 (THROWOVER GATE LOOPS, SPRING GATE LATCHES)

Item #	Item Name	US Retail	Unit	Packaged	Weight
4200-032	3" Galvanized Throw Over Gate Loop	42.21	each	each or 5/carton	4/20
4200-03SP	3" BPPCG Throw Over Gate Loop	52.29	each	each or 5/carton	4/20
4200-0352	3.5" Galvanized Throw Over Gate Loop	44.82	each	each or 5/carton	4/20
4200-035SP	3.5" BPPCG Throw Over Gate Loop	54.63	each	each or 5/carton	4/20
8326-002	HDG FG Spring Fastener Set - Behind	55.08	a set	each or 6/carton	5/30
8326-00P	BPPCG FG Spring Fastener Set - Behind	74.34	a set	each or 6/carton	5/30
8327-002	HDG FG Spring Fastener Set - Between	60.03	a set	each or 6/carton	6/33
8327-00P	BPPCG FG Spring Fastener Set - Between	80.01	a set	each or 6/carton	6/33

### Page 47 (SLIDE BOLT GATE LATCH, HEAVY DUTY GATE WHEEL)

Item #	Item Name	US Retail	Unit	Packaged	Weight
5002-L122	12" HDG Slide Bolt Latch	57.60	each	each or 6/carton	5/30
5002-L12SP	BPPCG 12" Slide Bolt Latch	70.65	each	each or 6/carton	5/30
5002-L152	15" HDG Slide Bolt Latch	60.12	each	each or 6/carton	6/35
5002-L15SP	BPPCG 15" Slide Bolt Latch	74.70	each	each or 6/carton	6/35
5110-002	HDG. Heavy Duty Gate Wheel	80.37	each	each	7
5110-00SP	BPPCG Heavy Duty Gate Wheel	91.80	each	each	7

### Page 48 (QUICK CATCH STAINLESS STEEL GATE LATCH)

Item #	Item Name	US Retail	Unit	Packaged	Weight
4100-2SS	2" Satin Stainless Quick Katch Latch	38.78	each	each	2
4100-2BSS	2" Black over Stainless Quick Katch Latch	54.08	each	each or 6/carton	2/10
4100-3SS	3" Satin Stainless Quick Katch Latch	116.40	each	each	2
4100-3BSS	3" Black over Stainless Quick Katch Latch	131.70	each	each or 6/carton	2/11
4100-35SS	3.5" Satin Stainless Quick Katch Latch	116.40	each	each	2
4100-35BSS	3.5" Black over Stainless Quick Katch Latch	131.70	each	each or 6/carton	2/11

### Page 49 (FASTENERS & TOUCH UP PAINT)

Item #	Item Name	US Retail	Unit	Packaged	Weight
1200-10B	Black Touch Up Paint (0.6 oz with brush)	5.58	each	Partial Carton	1
FP-BSL20C	2" x 5/16" Black Stainless Lag Bolt (100)	74.88	100 per pack	each	4
FP-BSL20M	2" x 5/16" Black Stainless Lag Bolt (1000)	673.83	1000 per box	each	40
FP-BSS10C	1" #8 Black Stainless Steel Screws (100)	11.16	100 per pack	each	1
FP-BSS10M	1" #8 Black Stainless Steel Screws (1000)	95.49	1000 per box	each	5
FP-BSS15C	1.5" #8 Black Stainless Steel Screws (100)	14.85	100 per pack	each	1
FP-BSS15M	1.5" #8 Black Stainless Steel Screws (1000)	127.26	1000 per box	each	6
FP-BSS20C	2" #12 Black Stainless Steel Screws (100)	29.97	100 per box	each	3
FP-BSS20M	2" #12 Black Stainless Steel Screws (1000)	255.24	1000 per box	each	15
FP-BT10C	1" #12 Black Stainless Steel TEK Screws (100)	29.97	100 per box	each	2
FP-BT10M	1" #12 Black Stainless Steel TEK Screws (1000)	255.24	1000 per box	each	13

# SNUG COTTAGE HARDWARE PRODUCT SECTION

PRODUCTS PRODUCED AND DISTRIBUTED BY SNUG COTTAGE HARDWARE

**Page 49 (FASTENERS & TOUCH UP PAINT) continued**

Item #	Item Name	US Retail	Packaged	Weight
FP-CB325	HDG 2.5" x 3/8" Carriage Bolt, Nut, & Washer	3.24	each	0.5
FP-CB330	HDG 3.0" x 3/8" Carriage Bolt, Nut, & Washer	3.24	each	0.5
FP-CB335	HDG 3.5" x 3/8" Carriage Bolt, Nut, & Washer	3.24	each	0.5
FP-CB340	HDG 4.0" x 3/8" Carriage Bolt, Nut, & Washer	3.24	each	0.5
FP-CB345	HDG 4.5" x 3/8" Carriage Bolt, Nut, & Washer	4.14	each	0.5
FP-CB350	HDG 5.0" x 3/8" Carriage Bolt, Nut, & Washer	4.14	each	1
FP-CB355	HDG 5.5" x 3/8" Carriage Bolt, Nut, & Washer	4.14	each	1
FP-CB360	HDG 6.0" x 3/8" Carriage Bolt, Nut, & Washer	4.14	each	1
FP-CB525	HDG 2.5" x 1/2" Carriage Bolt, Nut, & Washer	4.41	each	1
FP-CB530	HDG 3.0" x 1/2" Carriage Bolt, Nut, & Washer	4.41	each	1
FP-CB535	HDG 3.5" x 1/2" Carriage Bolt, Nut, & Washer	4.41	each	1
FP-CB540	HDG 4.0" x 1/2" Carriage Bolt, Nut, & Washer	4.41	each	1
FP-CB545	HDG 4.5" x 1/2" Carriage Bolt, Nut, & Washer	5.31	each	1.5
FP-CB550	HDG 5.0" x 1/2" Carriage Bolt, Nut, & Washer	5.31	each	1.5
FP-CB555	HDG 5.5" x 1/2" Carriage Bolt, Nut, & Washer	5.31	each	1.5
FP-CB560	HDG 6.0" x 1/2" Carriage Bolt, Nut, & Washer	5.31	each	1.5
FP-GL20C	2" x 5/16" Galvanized Lag Bolt (100)	28.08	each	4
FP-GL20M	2" x 5/16" Galvanized Lag Bolt (1000)	260.73	each	4

**Page 54 (BOSTON GARDEN POSTS AND CENTRAL PARK POSTS)**

Item #	Item Name	US Retail	Packaged	Weight
5200-48P	48" Boston Garden Post and Cap	85.95	partial carton	8
5200-48A	48" Central Park Post and Cap	85.95	partial carton	8
5200-72P	72" Boston Garden Post and Cap	113.85	partial carton	11
5200-72A	72" Central Park Post and Cap	113.85	partial carton	11
5200-00P	Boston Garden Cap Only	28.44	partial carton	2
5200-00A	Central Park Cap Only	28.44	partial carton	2

**Page 55 (ACCESSORY PACK FOR DOUBLE CHAIN FITTINGS)**

Item #	Item Name	US Retail	Packaged	Weight
5200-2CBSS	Black Accessory Pack for Double Chain	10.98	each or 25/carton	1/5

**Page 56 (LANDSCAPE CHAIN WITH BLACK POLYESTER POWDER COATING)**

Item #	Item Name	US Retail	Packaged	Weight
3429-182	3/16" HDG. Landscape Chain	2.70	up to 1000' lengths	
3429-18P	3/16" BPPCG Landscape Chain	5.40	up to 1000' lengths	
3429-212	1/4" HDG. Landscape Chain	3.60	up to 800' lengths	
3429-21P	1/4" BPPCG Landscape Chain	6.30	up to 800' lengths	
3429-232	5/16" HDG. Landscape Chain	5.40	up to 550' lengths	
3429-23P	5/16" BPPCG Landscape Chain	8.10	up to 550' lengths	
3429-242	3/8" HDG. Landscape Chain	7.20	up to 400' lengths	
3429-24P	3/8" BPPCG Landscape Chain	9.90	up to 400' lengths	

NO RETURNS OR REFUNDS ON CUT CHAIN

SPECIAL ORDER CHAIN (USUALLY TWO WEEKS FOR GAL, 4 TO 5 WEEKS FOR BPPCG) NO RETURNS OR REFUNDS

3429-252	1/2" HDG. Landscape Chain	12.78	200' length ONLY	
3429-25P	1/2" BPPCG Landscape Chain	16.38	200' length ONLY	

**Page 57 (VICTORIAN SPIKED CHAIN WITH BLACK POLYESTER POWDER COATING)**

Item #	Item Name	US Retail	Packaged	Weight
3827-06P	BPPCG Victorian Spiked Chain Alternate Links	10.80	82' per carton	55

**Page 58 & 59 (CHAIN MOUNTING ACCESSORIES)**

Item #	Item Name	US Retail	Packaged	Weight
3036-21P	1/4 Black over 316 Stainless Quick Link	5.04	each	1
3036-23P	5/16" Black over 316 Stainless Quick Link	8.01	each	1
3036-24P	3/8" Black over 316 Stainless Quick Link	12.87	each	1
3214-212	1/4" Gal Dee Shackle	1.44	each	1
3214-21P	1/4" BPPCG Dee Shackle	2.34	each	1
3214-232	5/16" Gal Dee Shackle	1.62	each	1
3214-23P	5/16" BPPCG Dee Shackle	2.70	each	1
3214-242	3/8" Gal Dee Shackle	4.32	each	1
3214-24P	3/8" BPPCG Dee Shackle	5.58	each	1
3481-002	Gal Cast Iron Hook (fits 3/8" threaded rod)	6.39	each	1
3481-00P	BPPCG Cast Iron Hook (fits 3/8" threaded rod)	8.73	each	1
3484-B316	Black 316 Stainless Link to Screw	5.94	each	1
3485-002	Gal Link to Screw	3.78	each	1
3485-00SP	BPPCG Link to Screw	8.01	each	1
3486-002	HDG Hooks on Plates	4.77	each	1
3486-00SP	BPPCG Hooks on Plates	6.93	each	1
3487-002	1/4" HDG Staples on Plates	4.77	each	1
3487-00SP	1/4" BPPCG Staples on Plates	6.93	each	1
3487-372	3/8" HDG Staples on Plates	8.82	each	1
3487-37SP	3/8" BPPCG Staples on Plates	9.90	each	1
3488-00P	Black Stainless Steel Screw Eye for Wood or Granite Posts	11.61	each	1
3900-002	HDG. Hitching Post Ring on Plate	9.63	each	1
3900-00SP	BPPCG Hitching Post Ring on Plate	13.14	each	1
3901-002	HDG. Hitching Post Ring on Eye to Screw	8.01	each	1
3901-00P	BPPCG Hitching Post Ring on Eye to Screw	13.32	each	1

# SNUG COTTAGE HARDWARE PRODUCT SECTION

PRODUCTS PRODUCED AND DISTRIBUTED BY SNUG COTTAGE HARDWARE

## Page 60 (HAMPTON THUMB LATCH FOR PVC)

Item #	Item Name	US Retail	Packaged	Weight
For Gates Up to 5" Thick (includes short and long thumb bar)				
4300-PSP	Hampton Thumb Latch for PVC	62.46	each or 10/carton	2/13
4300-PSEP	Hampton Thumb Latch for PVC with Padlock Eyes	67.95	each or 10/carton	2/13

## Page 61 (TWISTED RING GATE LATCH FOR PVC)

Item #	Item Name	US Retail	Packaged	Weight
4149-P6SP	Twisted Ring Latch for up to 5" thick PVC Gates	46.62	each or 10/carton	3/21
4149-PESP	Twisted Ring Latch for up to 5" thick PVC Gates with Padlock Eyes	52.11	each or 10/carton	3/23

## Page 62 & 63 (9" & 12" ADJUSTABLE OLD FASHIONED HEAVY DUTY HINGE FOR PVC)

Item #	Item Name	US Retail	Packaged	Weight
8292-09PSS	9" Adjustable Old Fashioned hinges	140.31	each or 6/carton	7/42
8292-12PSS	12" Adjustable Old Fashioned hinges	144.27	each or 6/carton	7/42

## Page 64 & 65 (CONVENTIONAL STAINLESS HARDWARE FOR PVC - SELF CLOSING HINGES, AUTO CLOSING LATCHES)

Item #	Item Name	US Retail	Packaged	Weight
7400-BPSS	Black Adjustable Self Closing Strap Hinge for PVC	64.89	each or 12/carton	4/46
7400-WPSS	White Adjustable Self Closing Strap Hinge for PVC	64.89	each or 12/carton	4/46
8100-BPSS	Black Adjustable Self Closing Hinge for PVC	59.31	each or 12/carton	4/42
8100-WPSS	White Adjustable Self Closing Hinge for PVC	59.31	each or 12/carton	4/42
8100-B316	Black Adjustable Self Closing Hinge for PVC -316 Stainless	72.54	each or 12/carton	4/42
8200-BPSS	Black Auto Locking Latch for PVC	31.77	each or 20/carton	2/39
8200-WPSS	White Auto Locking Latch for PVC	31.77	each or 20/carton	2/39
8200-B316	Black Auto Locking Latch for PVC - 316 Stainless	39.51	each or 20/carton	2/39
8300-BPSS	Extended Black Auto Locking Latch for PVC	37.98	each or 20/carton	2/42
8300-WPSS	Extended White Auto Locking Latch for PVC	37.98	each or 20/carton	2/42

## Page 66 & 67 (LOCKABLE CANE/DROP BOLTS FOR PVC, GATE STOP FOR PVC AND BRUTUS SPRING FOR PVC)

Item #	Item Name	US Retail	Packaged	Weight
1400-PSS	Black Stainless Gate Stop for PVC	13.77	each or 12/carton	1/7
1400-WPSS	White Stainless Gate Stop for PVC	15.57	each or 12/carton	1/7
4096-BP24	Black 24" Stainless Cane Bolt for PVC	43.47	each or 10/carton	4/35
4096-WP24	White 24" Stainless Cane Bolt for PVC	43.47	each or 10/carton	4/35
4096-BP36	Black 36" Stainless Cane Bolt for PVC	57.60	each or 10/carton	6/58
4096-WP36	White 36" Stainless Cane Bolt for PVC	57.60	each or 10/carton	6/58
4096-BP48	Black 48" Stainless Cane Bolt for PVC	65.81	each or 10/carton	6/58
4612-BPSS	Black "Brutus" Gate Spring for PVC	42.39	each or 20/carton	2/24

## Page 68 & 69 (STAINLESS HARDWARE FOR USE ON ORNAMENTAL ALUMINIUM GATES)

Item #	Item Name	US Retail	Packaged	Weight
3096-24SS	24" Black Lockable Cane Bolt for Aluminum	44.55	each or 10/carton	3/31
3096-36SS	36" Black Lockable Cane Bolt for Aluminum	56.43	each or 10/carton	4/41
3100-BPSS	Black Adjustable Self Closing Hinge for Aluminum	49.48	each or 12/carton	3/26
3200-BPSS	Black Auto Locking Latch for Aluminum	22.41	each or 20/carton	2/24

## DISTRIBUTOR SECTION

PRODUCTS LISTED IN THIS SECTION OF THE SNUG COTTAGE HARDWARE CATALOG ARE LISTED WITH BOTH THE DEALER COST (YOUR COST) AND A SUGGESTED RETAIL PRICE. PLEASE NOTE THE MARKUP VARIES WITH THE PRODUCT LINE. DEALERS ARE FREE TO SET THEIR OWN RETAIL PRICING.



**ROLLING DOOR  
HARDWARE**



**D & D  
TECHNOLOGIES  
HARDWARE**



**BORG LOCKS  
COMBINATION  
DEAD BOLT**

**BOSTON  
POST HOLE  
DIGGER**





# DISTRIBUTOR SECTION

PRODUCTS LISTED IN THIS SECTION OF THE SNUG COTTAGE HARDWARE CATALOG ARE HIGH QUALITY PRODUCTS WE FEEL ARE A GOOD FIT WITH SNUG COTTAGE HARDWARE.

## Page 70 & 71 (OLD FASHIONED ROLLING DOOR HARDWARE)

Item #	Item Name	US Retail Price	Selling unit
5600-3000	Mini Hangers (bolts & nuts for doors up to 2" thick included)	320.00	pair
5600-3001	Small Hangers (bolts & nuts for doors up to 2" thick included)	340.00	pair
5600-3002	Medium Hangers (bolts & nuts for doors up to 2" thick included)	390.00	pair
5600-3003	Large Hangers (bolts & nuts for doors up to 2" thick included)	410.00	pair
5600-3061	Small Single Strap Hangers (bolts & nuts for doors up to 2" thick	280.00	pair
5600-3063	Large Single Strap Hangers (bolts & nuts for doors up to 2" thick	360.00	pair
5600-3024	4' length of Track with 5 Standoffs and 4" Lags	130.00	set
5600-3025	5' length of Track with 6 Standoffs and 4" Lags	160.00	set
5600-3006	6' length of Track with 7 Standoffs and 4" Lags	200.00	set
5600-3008	8' length of Track with 9 Standoffs and 4" Lags	260.00	set
5600-3018	4" x 5/16 Black Stainless Lag Bolt	3.00	each
5600-3030	Track Stops (used at ends only)	40.00	pair
5600-3031	Adjustable Track Stops (used at ends or at any point on track)	60.00	pair
5600-3011	Safety Brackets-Spade Shape	60.00	pair
5600-3042	Concealed Safety Brackets(Top of Door)	30.00	pair
5600-3004	Stay Roller-Spade Shape	90.00	each
5600-3064	Fin Guide (for interior use only)	20.00	each
5600-3005	Door Stop - Spade Shape	40.00	each
5600-3009	Handle - Spade Shape	40.00	each
5600-3067	Recessed Handle	80.00	each
Accessories Supplied with Hardware if Required			
5600-3021	Track Joiner/Splicer	12.00	each
5600-3007S-1/	1/4" Standoff Extension	2.00	each
Snug Cottage Accessories for Rolling Door Hardware (Note higher retail mark up)			
4151-OSP	Black Twisted Ring Latch for Sliding Doors	53.28	each or 10/carton
4000-00SP	BPPCG Heavy Duty "T" Hasp	22.95	each or 10/carton

## Page 72 (SQUARE END ROLLING DOOR HARDWARE)

Item #	Item Name	US Retail Price	Selling unit
5600-3061	Small Single Strap Hangers (bolts & nuts for doors up to 2" thick	280.00	pair
5600-3063	Large Single Strap Hangers (bolts & nuts for doors up to 2" thick	360.00	pair
5600-3024	4' length of Track with 5 Standoffs and 4" Lags	130.00	set
5600-3025	5' length of Track with 6 Standoffs and 4" Lags	160.00	set
5600-3006	6' length of Track with 7 Standoffs and 4" Lags	200.00	set
5600-3008	8' length of Track with 9 Standoffs and 4" Lags	260.00	set
5600-3018	4" x 5/16 Black Stainless Lag Bolt	3.00	each
5600-3030	Track Stops (used at ends only)	40.00	pair
5600-3031	Adjustable Track Stops (used at ends or at any point on track)	60.00	pair
5600-3041	Plain Square End Safety Brackets	60.00	pair
5600-3042	Concealed Safety Brackets(Top of Door)	30.00	pair
5600-3045	Plain Square End Door Stop	40.00	each
5600-3044	Plain Square End Stay Roller	90.00	each
5600-3064	Fin Guide (for interior use only)	20.00	each
5600-3049	Plain Square End Handle	40.00	each
5600-3067	Recessed Handle	80.00	each

## Page 73 (BOSTON POST HOLE DIGGER AND HAND TWIST ROTARY AUGER DIGGER)

Item #	Item Name	US Retail Price	Selling unit
E-UNIV00	Boston Post Hole Digger (ships oversize)	150.00	each
E-678	Hand Twist Rotary Auger Digger (ships oversize)	90.00	each
Replacement Parts for E-UNIV00			
E-185003V	Wooden Handle	33.00	each
E-203240C	Lever Handle - tubular steel	22.95	each
E-203245	Connecting Rod - steel handle to scoop	22.95	each
E-2480070B	Digger Blade	16.15	each
E-2480090B	Steel Scoop	19.15	each
E-442001F	Scoop Casting	29.10	each
E-443001F	Blade Casting	37.50	each

## Page 74 (D & D TECHNOLOGIES)

Item #	Item Name	US Retail Price	Selling unit
LLDAB-K	Black LokkLatch Deluxe with EAK	102.25	each or 6/carton
LLDABW-K	White LokkLatch Deluxe with EAK	110.45	each or 6/carton
LL3GH	Black Polymer Handle	6.30	each or 10/carton
LLMKABT	Black LokkLatch Magnetic	112.20	each or 10/carton
ML3TPKA	Black Top Pull MagnaLatch	88.20	each or 15/carton
MLTPS2WTB	White Top Pull MagnaLatch	92.25	each or 15/carton

## Page 75 (BORG LOCKS - LATERAL ACTION DEAD BOLT)

Item #	Item Name	US Retail Price	Selling unit
BL2615-RH	Lateral Action Combination Dead Bolt (Right Hand)	175.00	each
BL2615-LH	Lateral Action Combination Dead Bolt (Left Hand)	175.00	each
BL-4EXT	Extension Kit for doors up to 4" thick	29.10	each
MG Cover	All Weather Cover for Combination Side of lock	22.00	each

# TERMS OF SALE

## 1. Shipping and Handling Fee

All items are sent UPS Ground Service or U.S. Mail

Order less than \$50.00 shipping charge is \$10.00

Order more than \$50.00 but less than \$150.00 shipping charge is \$15.00

Order more than \$150.00 but less than \$300.00 shipping charge is \$22.00

Order more than \$300.00 but less than \$600.00 shipping charge is \$32.00

Order more than \$600.00 but less than \$1000.00 shipping charge is \$43.00

Order more than \$1000.00 add 5% for shipping

Above charges apply to shipments in the continental USA.

For shipping costs to destinations in Alaska, Hawaii, or Canada please call for quote.

Oversize items may incur extra shipping charges.

2. No minimum purchase necessary.

3. We accept VISA or MasterCard ONLY. NO COD's.

4. All returns must be approved prior to shipment. Please call for authorization and shipping address.

5. Returns are subject to inspection and a 15% restocking charge (Minimum \$5.00) plus all shipping costs. Ensure product is packed properly to prevent damage during shipment. Credit will not be given for goods that are returned damaged.

Return Address:

Snug Cottage Hardware

3000 Ravenswood Road

Marysville, MI 48040

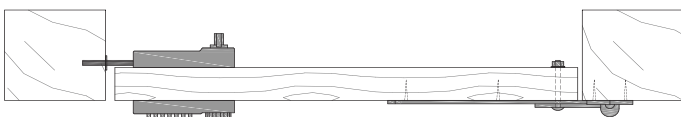
6. **No Returns after 30 days.**

7. Prices are subject to change without notice.

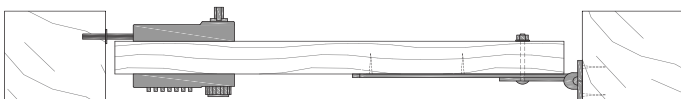
8. **Check ALL shipments upon arrival. Missing cartons or damaged goods must be reported to the driver at the time of delivery. DO NOT SIGN FOR DAMAGED GOODS WITHOUT NOTING IT WITH THE DRIVER.**

9. It is the responsibility of the installer to ensure hardware is installed as per the instructions supplied and to ensure that the use of the hardware is in accordance with local building codes.

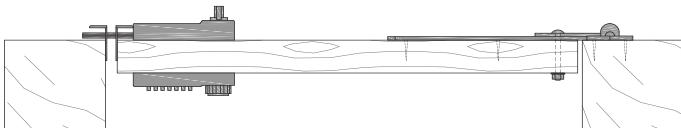
### RIGHT HAND INSTALLATIONS (BL2615-RH)



FLUSH ON THE OUTSIDE



INSTALLED IN CENTER OF OPENING



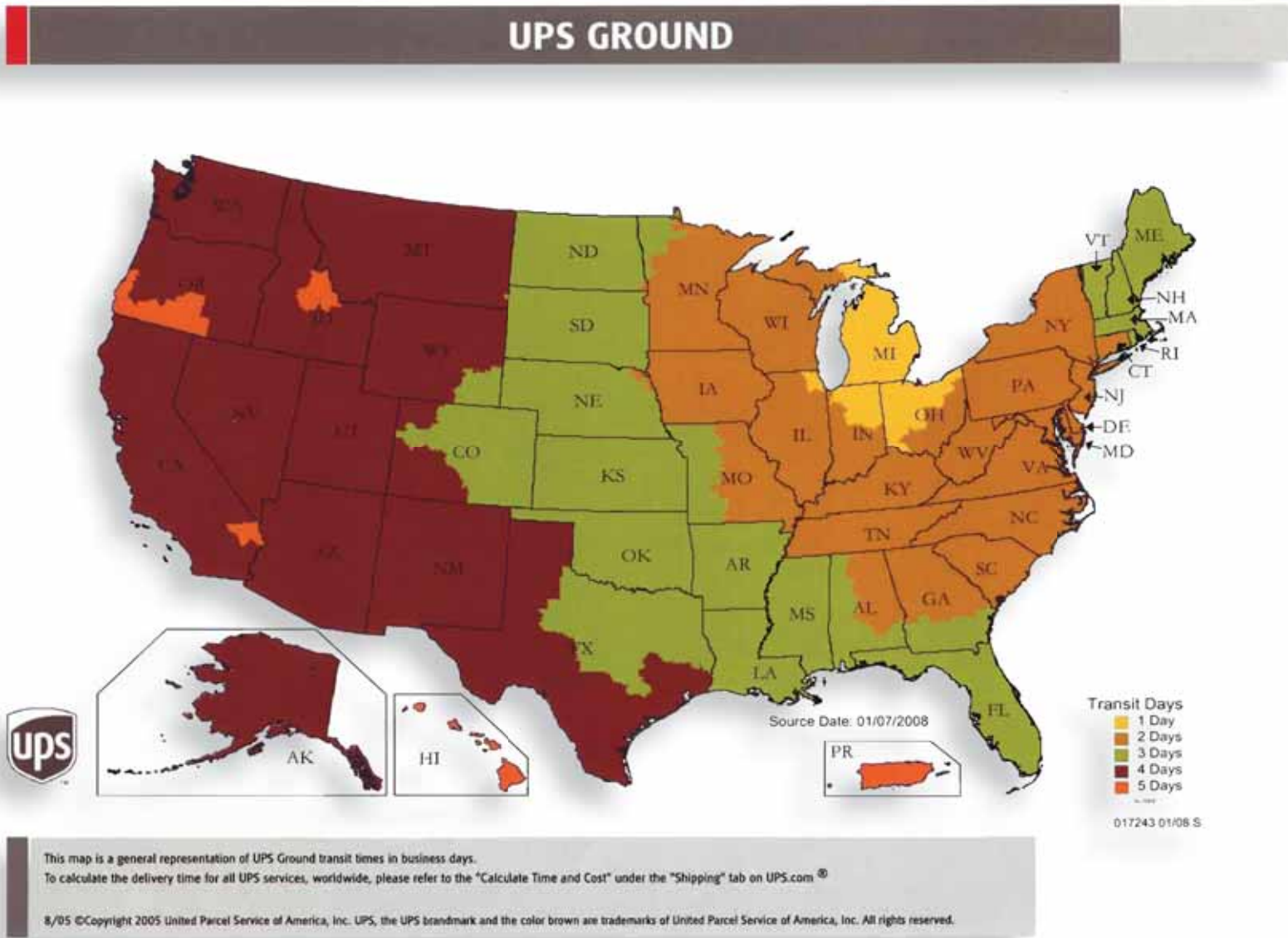
FLUSH ON THE INSIDE

**RIGHT HAND  
OR  
LEFT HAND**

**ORDERING INFORMATION  
FOR BORG LOCKS**

# UPS SHIPPING TIMES

MAP BELOW IS PUBLISHED BY UPS AND IS A GUIDE FOR THEIR GROUND SERVICE FROM OUR LOCATION IN MARYSVILLE, MI 48040.



**AT SNUG COTTAGE HARDWARE WE STRIVE TO OFFER EXCELLENT SERVICE. MOST ORDERS RECEIVED BY NOON SHIP THE SAME DAY THE ORDER IS RECEIVED. PLEASE CONSULT ABOVE CHART FOR SHIPMENT TIMES FROM MICHIGAN.**

**WE WOULD LIKE TO THANK YOU, OUR CUSTOMER, FOR YOUR SUPPORT AND BUSINESS.**

# THE SNUG COTTAGE DIFFERENCE!

OUR **B**LACK **P**OLYESTER **P**OWDER **C**OAT IS OVER HOT DIPPED **G**ALVANIZED (**BPPCG**). IT IS NOT OVER BARE METAL OR A FAR INFERIOR ELECTROPLATE FINISH.

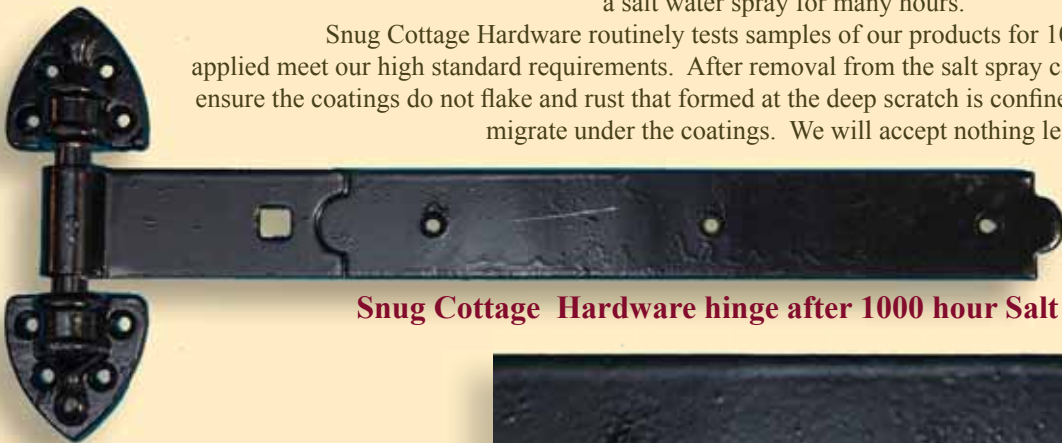
DUE TO THE DIFFICULTY OF SUCCESSFULLY POWDER COATING OVER HOT DIPPED GALVANIZED PRODUCT WE USE A LOCAL MICHIGAN COMPANY FOR THIS PROCESS. WE APPLY THIS LABEL TO ALL OUR BPPCG PRODUCT.



## TESTING FOR RUST RESISTANCE

Salt spray testing is the industry standard when it comes to determining a products surface coating stability and the ability to resist rusting over time. Prior to testing a deliberate scratch is made that penetrates the surface coating deep into the underlying metal substrate. Typically a sample of the product is put in a cabinet where it is sprayed with a salt water spray for many hours.

Snug Cottage Hardware routinely tests samples of our products for 1000 hours to ensure the finishes applied meet our high standard requirements. After removal from the salt spray cabinet product is examined to ensure the coatings do not flake and rust that formed at the deep scratch is confined to the scratch and does not migrate under the coatings. We will accept nothing less



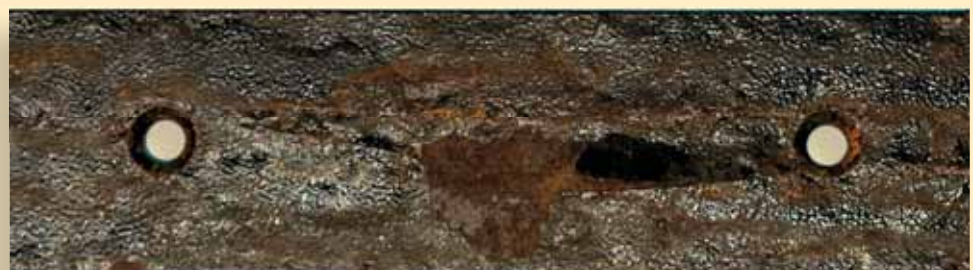
**Snug Cottage Hardware hinge after 1000 hour Salt Spray Test**



**Close up of Deliberate Scratch shows little rust, no rust migration, and no detachment of the surface coating**



**Competitor's hinge after the same 1000 hour Salt Spray Test**



**Close up of Deliberate Scratch shows excessive rust, dramatic rust migration, and advanced detachment of the surface coating**

## SNUG COTTAGE HARDWARE

MARYSVILLE, MICHIGAN, U.S.A.

PHONE: (800) 637-5427

[www.snugcottagehardware.com](http://www.snugcottagehardware.com)

LONDON, ONTARIO, CANADA

FAX: (519) 474-3337

[info@snugcottagehardware.com](mailto:info@snugcottagehardware.com)