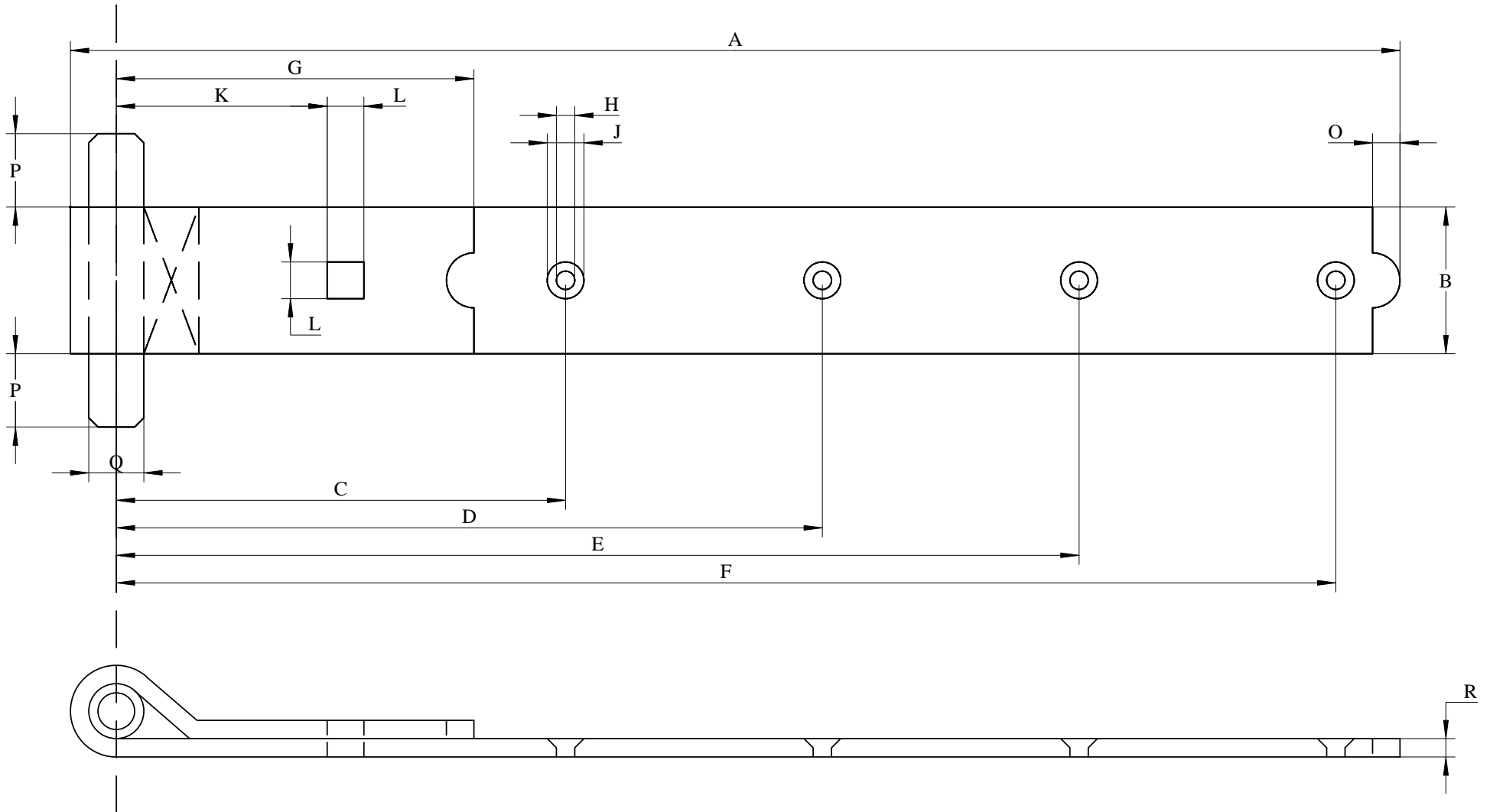


SNUG COTTAGE HARDWARE (8292 OLD FASHIONED STRAP HINGE SPEC SHEET)

www.snugcottagehardware.com

see accompanying Dimensions and Sizes Sheet



SNUG COTTAGE HARDWARE
 Old Fashioned Heavy Duty Hinges (8292)
 Dimensions and Sizes

Strap Length (inches)	DIMENSION (inches)														
	A	B	C	D	E	F	G	H	J	K	L	O	P	Q	R
7	7	1.5	6.125	NA	NA	NA	4	0.25	0.5	2.375	7/16" for 3/8" carriage bolt	0.375	0.75	0.5	0.1875
12	12	1.5	6	NA	NA	10.875	4.125	0.25	0.5	2.5	7/16" for 3/8" carriage bolt	0.375	0.75	0.5	0.1875
14	14	1.5	6.625	NA	NA	12.875	4.125	0.25	0.5	2.5	7/16" for 3/8" carriage bolt	0.375	0.75	0.5	0.1875
16	16	1.5	6	11	NA	15	4.125	0.25	0.5	2.5	7/16" for 3/8" carriage bolt	0.375	0.75	0.5	0.1875
18	18	2	6.75	11.625	NA	16.5	5.625	0.25	0.5	3.25	9/16" for 1/2" carriage bolt	0.5	1	0.625	0.1875
20	20	2	8.5	13.5	NA	18.5	4.875	0.25	0.5	3.25	9/16" for 1/2" carriage bolt	0.5	1	0.625	0.1875
24	24	2.25	7.5	15.5	NA	22.5	5	0.25	0.5	3.25	9/16" for 1/2" carriage bolt	0.625	1	0.625	0.1875
30	30	2.25	12.5	21	NA	29	5.375	0.25	0.5	3.75	9/16" for 1/2" carriage bolt	0.625	1	0.75	0.1875
36	36	2.25	12.5	21	28.75	34.75	5.375	0.25	0.5	3.75	9/16" for 1/2" carriage bolt	0.625	1	0.75	0.1875
48	48	2.75	11.125	23	34.75	46.5	5.375	0.25	0.5	3.75	9/16" for 1/2" carriage bolt	0.625	1	0.875	0.25

* Screw hole locations are +/- 0.125 inches
 NA = Not Applicable for this size

12/8/2009