

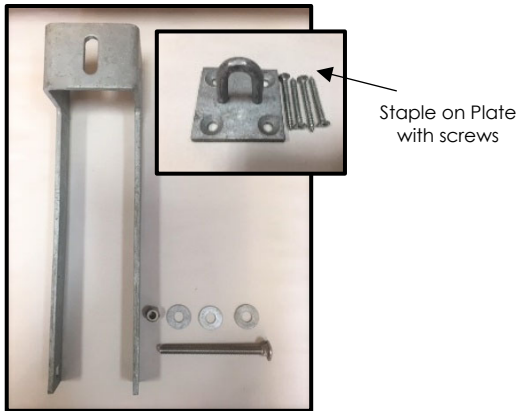


4200 Throw Over Gate Loop

3" & 3.5" Widths

Installation Instructions

Before you begin installation, please consult your local building code and/or pool code to ensure this product is suitable for your application. Periodic maintenance and testing to ensure proper operation is recommended.



Package Contents:

- 1 x Throw Over Gate Loop Arm
- 3 x 3/8" Hot Dipped Galvanized Washers
- 1 x 4.5" or 5" x 3/8" Stainless Steel Carriage Bolt
- 1 x 3/8" Lock nut
- 1 x Staple on plate
- 4 x 1.5" x #8 stainless steel screws

Recommended Tools:

- #2 Phillips head screw driver/ screw bit
- 3/8" Drill bit
- Drill
- Pencil
- Measure Tape
- Second pair of hands

The Throw Over Gate Loop is used to latch two gates that meet in the middle of an opening. It is intended for use on farm gates, driveways, or anywhere that an easy to operate, reliable latch is required. It is suited for use on wood or PVC gates. It is not intended for use on round rails.

To Begin:

Make sure that you have purchased the correct size latch for the gate thickness you are using. The 4200-032/03SP are intended for 3" thick gates (2 3/4" to 3" is ideal), while the 4200-0352/035SP are intended for use on 3.5" thick gates (3 1/4" to 3 1/2" is ideal). It is supplied with a staple on plate to make the latch easily lockable.



To Install the Throw Over Loop Arm:

Place the Throw Over Loop Arm on the gate in the closed position, mark the center of the square hole, remove the hardware and drill a 3/8" hole. The carriage bolt provided should be installed with the head on the inside of the field (if livestock are being contained). Install a washer between each arm of the throw over loop and the gate. Thread the stainless steel locking nut to fully engage it on the carriage bolt. Do not over tighten as this will restrict the swing action of the throw over loop.

To Install the Staple on plate:

The staple on plate should be mounted on top of the opposite gate so that it is engaged by the hole in the top of the Throw Over Loop Arm. With the gate closed, place the parts and ensure good working action. Mark this location on the top of the gate, pre drill your holes for the staple on plate, and then fasten with the screws (1.5" #8) provided. A snap fastener or pad lock should then be installed through the staple at all times to ensure that the throw over loop is not accidentally lifted by livestock. The use of a cane bolt on one of the gates is recommended to ensure a sturdy installation. Periodic attention to ensure proper alignment of the staple to the hole in the throw over loop arm is essential.



SNUG COTTAGE HARDWARE
Marysville, MI USA & London, ON Canada
www.snugcottagehardware.com
Phone: (519)473-2794 - Fax: (519)474-3337